



REGIONAL SPECIALISED METEOROLOGICAL CENTRE-TROPICAL CYCLONES, NEW DELHI
SPECIAL TROPICAL WEATHER OUTLOOK

DEMS-RSMC TROPICAL CYCLONES NEW DELHI DATED 01.12.2023

SPECIAL TROPICAL WEATHER OUTLOOK FOR NORTH INDIAN OCEAN (THE BAY OF BENGAL AND THE ARABIAN SEA) VALID FOR NEXT 168 HOURS ISSUED AT 0600 UTC OF 01.12.2023 BASED ON 0300 UTC OF 01.12.2023.

SUB: DEPRESSION OVER SOUTHEAST ADJOINING SOUTHWEST BAY OF BENGAL

THE DEPRESSION OVER SOUTHEAST AND ADJOINING SOUTHWEST BAY OF BENGAL MOVED NORTHWESTWARDS WITH A SPEED OF 10 KMPH DURING PAST 03 HOUR AND LAY CENTERED AT 0300 HOURS UTC OF TODAY, THE 01ST DECEMBER, 2023 OVER THE SAME REGION NEAR LATITUDE 9.3°N AND LONGITUDE 86.2°E, ABOUT 760 KM EAST-SOUTHEAST OF PUDUCHERRY (43331), 780 KM EAST-SOUTHEAST OF CHENNAI (43279), 960 KM SOUTHEAST OF BAPATLA (43220) AND 940 KM SOUTHEAST OF MACHILIPATNAM (43185).

IT IS LIKELY TO MOVE WEST-NORTHWESTWARDS, INTENSIFY INTO A DEEP DEPRESSION BY 2ND DECEMBER AND FURTHER INTO A CYCLONIC STORM OVER SOUTHWEST BAY OF BENGAL AROUND 3RD DECEMBER. THEREAFTER, IT WOULD MOVE NORTHWESTWARDS AND CROSS SOUTH ANDHRA PRADESH AND ADJOINING NORTH TAMIL NADU COASTS BETWEEN CHENNAI AND MACHILIPATNAM AROUND EVENING OF 4TH DECEMBER AS A CYCLONIC STORM.

TRACK & INTENSITY FORECASTS:

DATE/TIME (UTC)	POSITION (LAT. °N/ LONG. °E)	MAXIMUM SUSTAINED SURFACE WIND SPEED (KMPH)	CATEGORY OF CYCLONIC DISTURBANCE
01.12.23/0300	9.3/86.2	35-45 KMPH GUSTING TO 55 KMPH	DEPRESSION
01.12.23/1200	9.9/85.4	40-50 KMPH GUSTING TO 60 KMPH	DEPRESSION
02.12.23/0000	10.9/84.0	50-60 KMPH GUSTING TO 70 KMPH	DEEP DEPRESSION
02.12.23/1200	11.6/82.7	55-65 KMPH GUSTING TO 75 KMPH	DEEP DEPRESSION
03.12.23/0000	12.2/81.9	60-70 KMPH GUSTING TO 80 KMPH	CYCLONIC STORM
03.12.23/1200	12.8/81.2	70-80 KMPH GUSTING TO 90 KMPH	CYCLONIC STORM
04.12.23/0000	13.4/80.8	75-85 KMPH GUSTING TO 95 KMPH	CYCLONIC STORM
04.12.23/1200	14.4/80.3	80-90 KMPH GUSTING TO 100 KMPH	CYCLONIC STORM
05.12.23/0000	15.3/80.2	70-80 KMPH GUSTING TO 90 KMPH	CYCLONIC STORM
05.12.23/1200	16.2/80.7	60-70 KMPH GUSTING TO 80 KMPH	CYCLONIC STORM

INSAT -3D IMAGERY AT 0300 UTC, INDICATES VORTEX OVER SOUTHEAST BAY OF BENGAL AND NEIGHBOURHOOD HAS INTENSIFIED AND NOW LAY CENTERED WITHIN HALF A DEGREE OF 9.0N / 86.5E WITH ASSOCIATED INTENSITY OF T1.5. ASSOCIATED SCATTERED TO BROKEN LOW/MEDIUM CLOUDS WITH EMBEDDED INTENSE TO VERY INTENSE CONVECTION LAY OVER SOUTH AND ADJOINING CENTRAL BAY OF BENGAL BETWEEN LATITUDE 5.0°N TO 15.0°N LONGITUDE 82.0E TO 92.0E. MINIMUM CLOUD TOP TEMPERATURE IS MINUS 93 DEGREE CELSIUS.

Cloud distribution: (a) Isolated: <25%, Scattered:25-50%, Broken: 51-75%, Solid:>75%, Convection Intensity: (a) Weak: Cloud Top Temperature (CTT) >-25°C, (b) Moderate: CTT: - 25°C to -40°C, (c) Intense: CTT: - 41°C to -70°C and (d) Very Intense: : Less than -70°C
PROBABILITY OF CYCLOGENESIS (FORMATION OF DEPRESSION):NIL: 0%, LOW: 1-33%, , MODERATE: 34-66% AND HIGH: 67-100%
This is a guidance Bulletin for WMO/ESCAP Panel Member countries. Visit respective National websites for Country specific Bulletins

ASSOCIATED MAXIMUM SUSTAINED WIND SPEED IS 20 KNOTS GUSTING TO 30 KNOTS. ESTIMATED CENTRAL PRESSURE IS 1002 HPA. SEA CONDITION IS LIKELY TO BE ROUGH TO VERY ROUGH OVER THE SOUTHWEST & ADJOINING SOUTHEAST BAY OF BENGAL. A BUOY NEAR 6.5°N/88.5°E REPORTED MAXIMUM SUSTAINED WIND SPEED AS 700/19.4 KT.

Remarks:

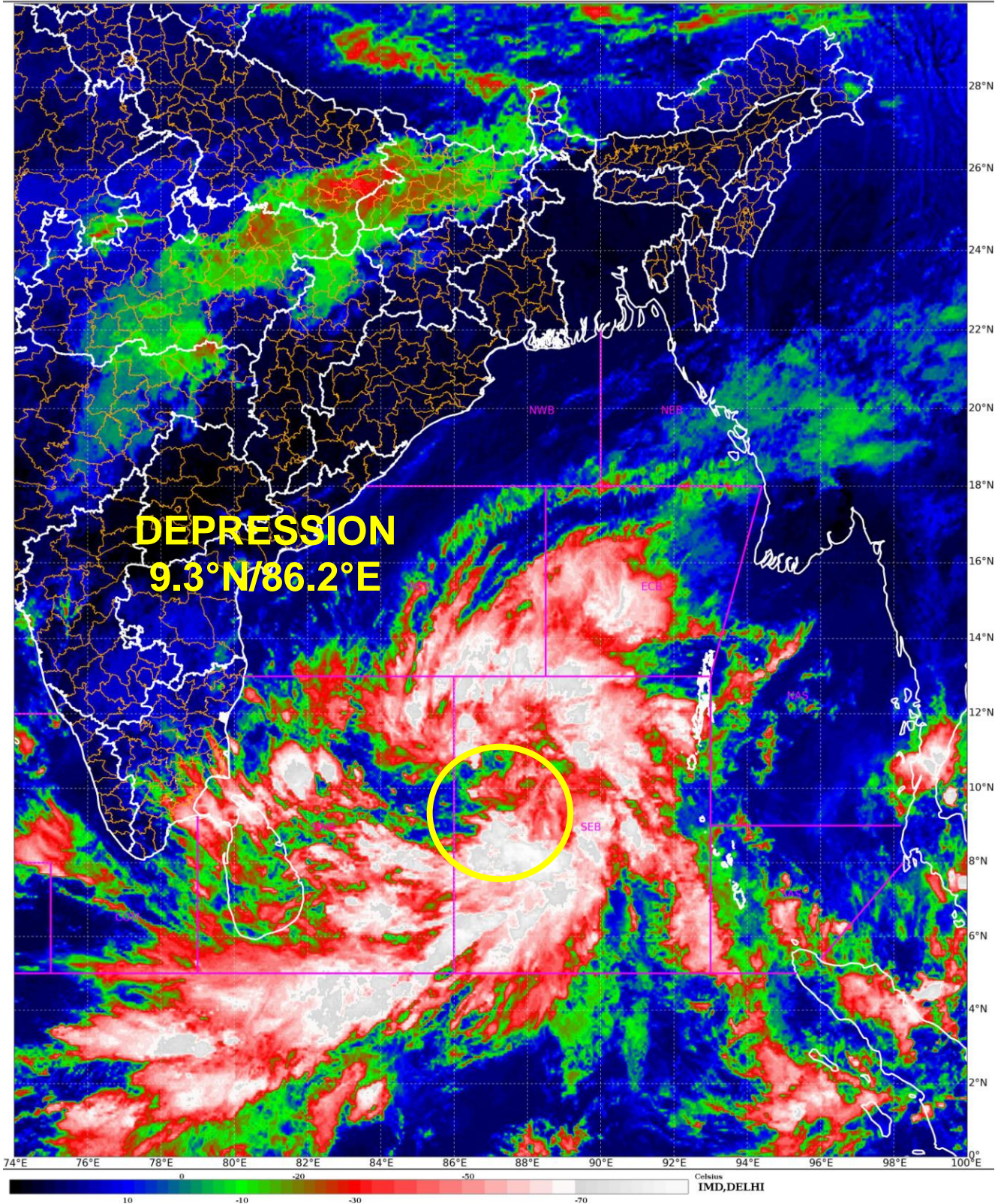
MADDEN JULIAN OSCILLATION (MJO) IS CURRENTLY IN PHASE 3 WITH AMPLITUDE GREATER THAN 1. IT WOULD MOVE ACROSS PHASES 3 AND 4 WITH AMPLITUDE GREATER THAN 1 DURING 1ST TO 6TH DECEMBER. THUS, MJO WOULD SUPPORT CYCLOGENESIS OVER THE BAY OF BENGAL (BOB) REGION TILL 6TH DECEMBER. SEA SURFACE TEMPERATURE IS 28-30°C OVER MAJOR PARTS OF BOB. TROPICAL CYCLONE HEAT POTENTIAL IS 60-70 KJ/CM² OVER SOUTHEAST BOB. THE NCICS BASED FORECASTS FOR EQUATORIAL WAVES INDICATE STRENGTHENING OF WESTERLY WINDS ALONGWITH PRESENCE OF EQUATORIAL ROSSBY WAVES & MJO OVER SOUTH BOB AND EASTERLY WINDS OVER CENTRAL BOB DURING 01 – 4TH DECEMBER. ALL THESE LARGE SCALE FEATURES ARE FAVOURABLE FOR CYCLOGENESIS (INTENSIFICATION INTO A CYCLONIC STORM) OVER SOUTHWEST BOB.

CURRENT ENVIRONMENTAL FEATURES INDICATE, POSITIVE LOW LEVEL VORTICITY OF 50-60X10⁻⁶S⁻¹ AROUND SYSTEM CENTRE WITH VERTICAL EXTENSION UPTO 200 HPA LEVEL. POSITIVE LOW LEVEL CONVERGENCE IS ABOUT 10 X 10⁻⁵ S⁻¹ TO THE EAST OF SYSTEM CENTRE. POSITIVE UPPER LEVEL DIVERGENCE HAS INCREASED AND IS ABOUT 40 X 10⁻⁵ S⁻¹ TO THE SOUTHEAST OF THE SYSTEM CENTRE AND IS NORTH-SOUTH ORIENTED. WIND SHEAR IS ABOUT 10-15 KNOTS OVER SOUTH BOB AND UPTO 12°N. LOW TO MODERATE CLOCKWISE DEEP LAYER WIND SHEAR IS SUPPORTING INTENSIFICATION OF THE SYSTEM.

GUIDANCE FROM VARIOUS NUMERICAL MODELS IS INDICATING INITIAL NORTHWESTWARDS MOVEMENT TOWARDS ANDHRA PRADESH AND ADJOINING NORTH TAMIL NADU COASTS, WITH CROSSING OVER SOUTH ANDHRA PRADESH COAST AND NORTHEASTWARDS MOVEMENT ALONG THE COAST. THERE IS GOOD CONSENSUS AMONG THE MODELS WITH RESPECT TO MOVEMENT. WITH RESPECT TO INTENSIFICATION, MOST OF THE MODELS ARE INDICATING THE SYSTEM TO INTENSIFY INTO A CYCLONIC STORM. PEAK INTENSIFICATION OF 45 KNOTS IS SUGGESTED. HOWEVER, ECMWF IS INDICATING INTENSIFICATION UPTO DEEP DEPRESSION STAGE. IMD GFS IS INDICATING INTENSIFICATION UPTO VERY SEVERE CYCLONIC STORM. IMD MME IS INDICATING INTENSIFICATION UPTO 45 KNOTS (CYCLONIC STORM CATEGORY).

CONSIDERING ALL THE ABOVE, THE DEPRESSION OVER SOUTHEAST AND ADJOINING SOUTHWEST BAY OF BENGAL IS LIKELY TO MOVE WEST-NORTHWESTWARDS AND INTENSIFY INTO A DEEP DEPRESSION BY 2ND DECEMBER AND FURTHER INTO A CYCLONIC STORM OVER SOUTHWEST BAY OF BENGAL AROUND 3RD DECEMBER. THEREAFTER, IT WOULD MOVE NORTHWESTWARDS AND CROSS SOUTH ANDHRA PRADESH AND ADJOINING NORTH TAMIL NADU COASTS BETWEEN CHENNAI AND MACHILIPATNAM AROUND EVENING OF 4TH DECEMBER AS A CYCLONIC STORM.

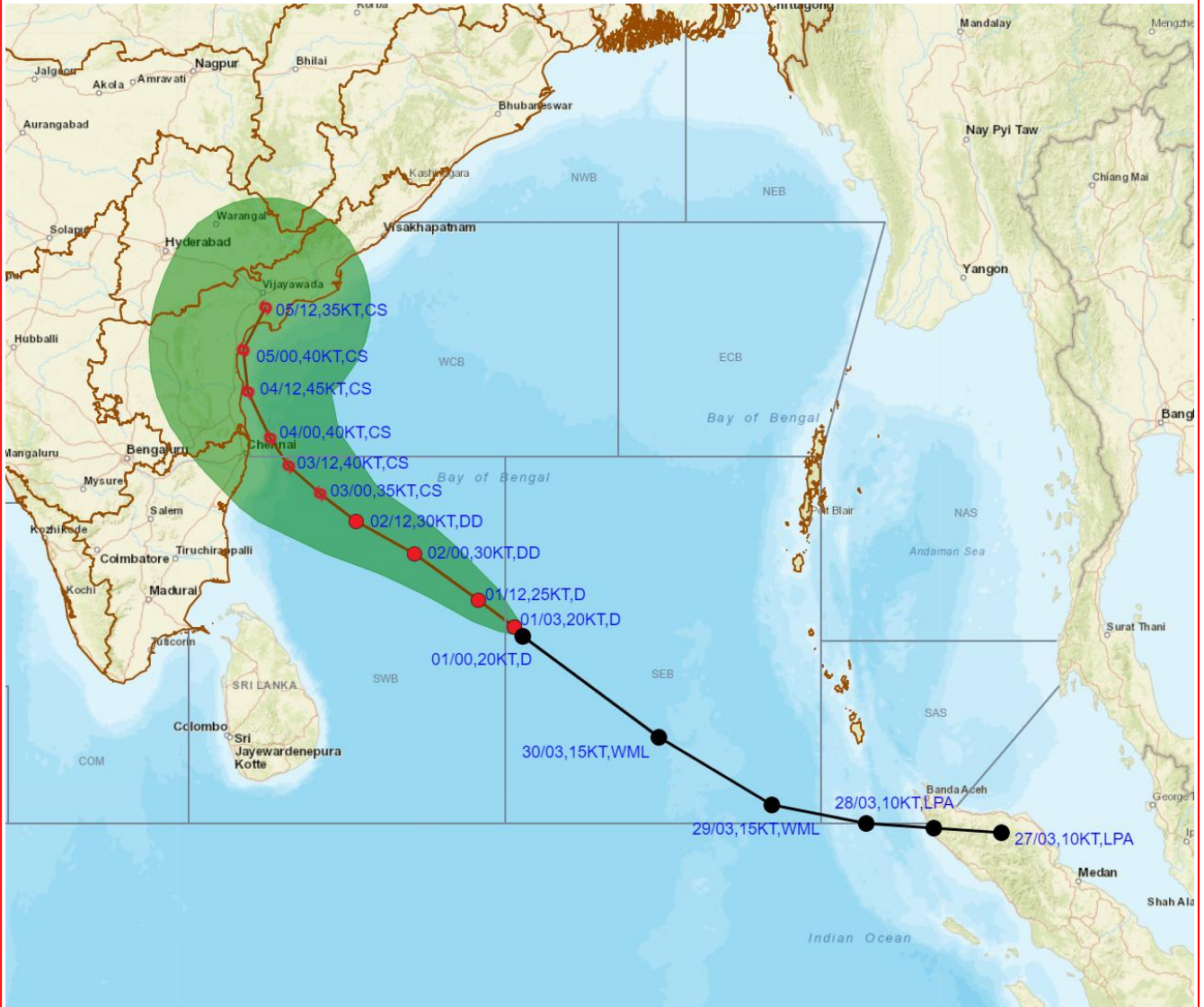
(AKHIL SRIVASTAVA)
RSMC NEW DELHI



Cloud distribution: (a) Isolated: <25%, Scattered:25-50%, Broken: 51-75%, Solid:>75%, Convection Intensity: (a) Weak: Cloud Top Temperature (CTT) >-25°C, (b) Moderate: CTT: - 25°C to -40°C, (c) Intense: CTT: - 41°C to -70°C and (d) Very Intense: : Less than -70°C
PROBABILITY OF CYCLOGENESIS (FORMATION OF DEPRESSION):NIL: 0%, LOW: 1-33%, , MODERATE: 34-66% AND HIGH: 67-100%
This is a guidance Bulletin for WMO/ESCAP Panel Member countries. Visit respective National websites for Country specific Bulletins



OBSERVED AND FORECAST TRACK ALONGWITH CONE OF UNCERTAINTY IN ASSOCIATION WITH DEPRESSION OVER SOUTHEAST ADJOINING SOUTHWEST BAY OF BENGAL BASED ON 0300 UTC (0830 IST) OF 01ST DECEMBER 2023.

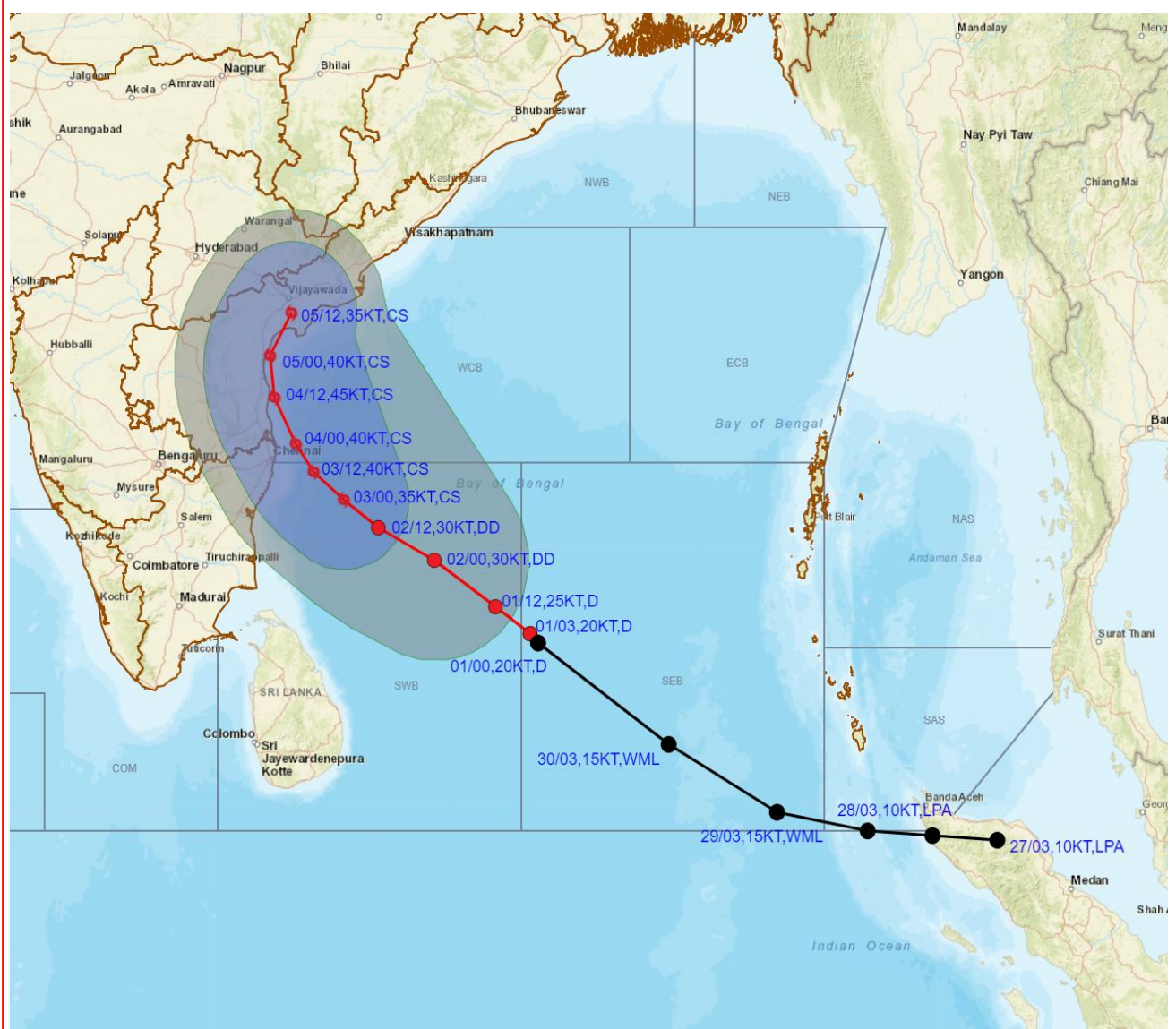


DATE/TIME IN UTC
 IST=UTC + 0530
 L: LOW PRESSURE AREA
 WML: WELL MARKED LOW PRESSURE AREA
 D: DEPRESSION (17-27 KT)
 DD: DEEP DEPRESSION (28-33 KT)
 CS: CYCLONIC STORM (34-47 KT)
 SCS: SEVERE CYCLONIC STORM (48-63KT)
 VSCS: VERY SEVERE CYCLONIC STORM (64-89 KT)
 ESCS: EXTREMELY SEVERE CYCLONIC STORM (90-119 KT)
 SuCS: SUPER CYCLONIC STORM (\geq 120 KT)

- LESS THAN 34 KT
- 34-47 KT
- \geq 48 KT
- OBSERVED TRACK
- FORECAST TRACK
- CONE OF UNCERTAINTY



OBSERVED AND FORECAST TRACK ALONG WITH QUADRANT WIND DISTRIBUTION IN ASSOCIATION WITH DEPRESSION OVER SOUTHEAST ADJOINING SOUTHWEST BAY OF BENGAL BASED ON 0300 UTC (0830 IST) OF 01ST DECEMBER 2023.



DATE/TIME IN UTC
IST=UTC + 0530

L: LOW PRESSURE AREA
WML: WELL MARKED LOW PRESSURE AREA
D: DEPRESSION (17-27 KT)
DD: DEEP DEPRESSION (28-33 KT)
CS: CYCLONIC STORM (34-47 KT)
SCS: SEVERE CYCLONIC STORM (48-63KT)
VSCS: VERY SEVERE CYCLONIC STORM (64-89 KT)
ESCS: EXTREMELY SEVERE CYCLONIC STORM (90-119 KT)
SuCS: SUPER CYCLONIC STORM (≥ 120 KT)

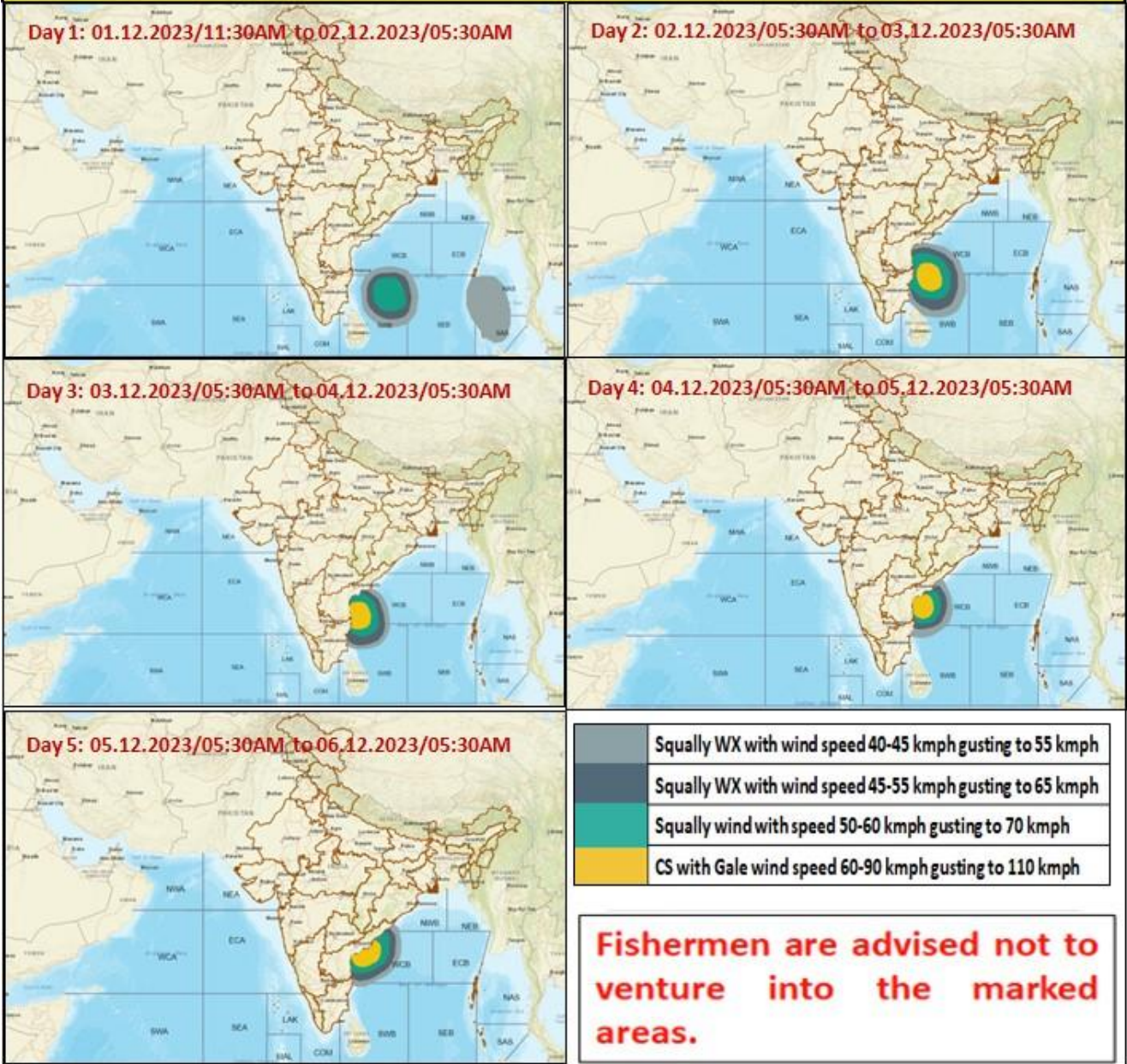
● LESS THAN 34 KT
○ 34-47 KT
○ ≥ 48 KT
— OBSERVED TRACK
— FORECAST TRACK
● CONE OF UNCERTAINTY
AREA OF MAXIMUM SUSTAINED WIND SPEED:
■ 28-33 KT (52-61 KMPH)
■ 34-49 KT (62-91 KMPH)
■ 50-63 KT (92-117 KMPH)
■ ≥ 64 KT (≥ 118 KMPH)

IMPACT OVER THE SEA

MSW (knot/kmph)	Impact	Action
28-33 (52-61)	Very rough seas	Total suspension of fishing operations
34-49 (62-91)	High to very high seas	Total suspension of fishing operations
50-63 (92-117)	Very high seas	Total suspension of fishing operations
≥ 64 (≥ 118)	Phenomenal	Total suspension of fishing operations

Cloud distribution: (a) Isolated: <25%, Scattered:25-50%, Broken: 51-75%, Solid:>75%, Convection Intensity: (a) Weak: Cloud Top Temperature (CTT) >-25°C, (b) Moderate: CTT: - 25°C to -40°C, (c) Intense: CTT: - 41°C to -70°C and (d) Very Intense: : Less than -70°C
PROBABILITY OF CYCLOGENESIS (FORMATION OF DEPRESSION):NIL: 0%, LOW: 1-33%, , MODERATE: 34-66% AND HIGH: 67-100%
This is a guidance Bulletin for WMO/ESCAP Panel Member countries. Visit respective National websites for Country specific Bulletins

Fishermen warning graphics



Cloud distribution: (a) Isolated: <25%, Scattered:25-50%, Broken: 51-75%, Solid:>75%, Convection Intensity: (a) Weak: Cloud Top Temperature (CTT) >-25°C, (b) Moderate: CTT: - 25°C to -40°C, (c) Intense: CTT: - 41°C to -70°C and (d) Very Intense: : Less than -70°C
 PROBABILITY OF CYCLOGENESIS (FORMATION OF DEPRESSION):NIL: 0%, LOW: 1-33%, , MODERATE: 34-66% AND HIGH: 67-100%
 This is a guidance Bulletin for WMO/ESCAP Panel Member countries. Visit respective National websites for Country specific Bulletins